



**THAI MITSUWA PUBLIC COMPANY LIMITED**

***KORAT FACTORY***

**会社案内**



***- Company Profile -***



# Mitsuwa Group Company Location

Originally, Mitsuwa Company, our business has been established in Osaka, Japan 1959.

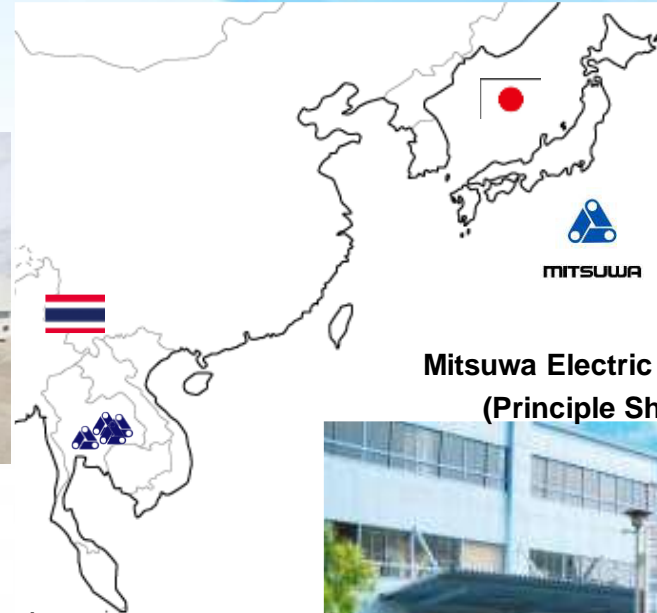
**THAI MITSUWA (1987)**  
**(Pathumthani : Injection)**

1,112 Persons



**THAI MITSUWA (2004)**  
**(Korat Plant : Injection)**

271 Persons



**THAI MITSUWA (2010)**  
**(Korat Plant : Magnesium Spray)**

552 Persons



**THAI MITSUWA (2019)**  
**(Korat Nava : Magnesium Injection)**

1,215 Persons



**Mitsuwa Electric Industry Co.,Ltd**  
**(Principle Share Holder).**

280 Persons







# Thai Mitsuwa Public Co.,Ltd



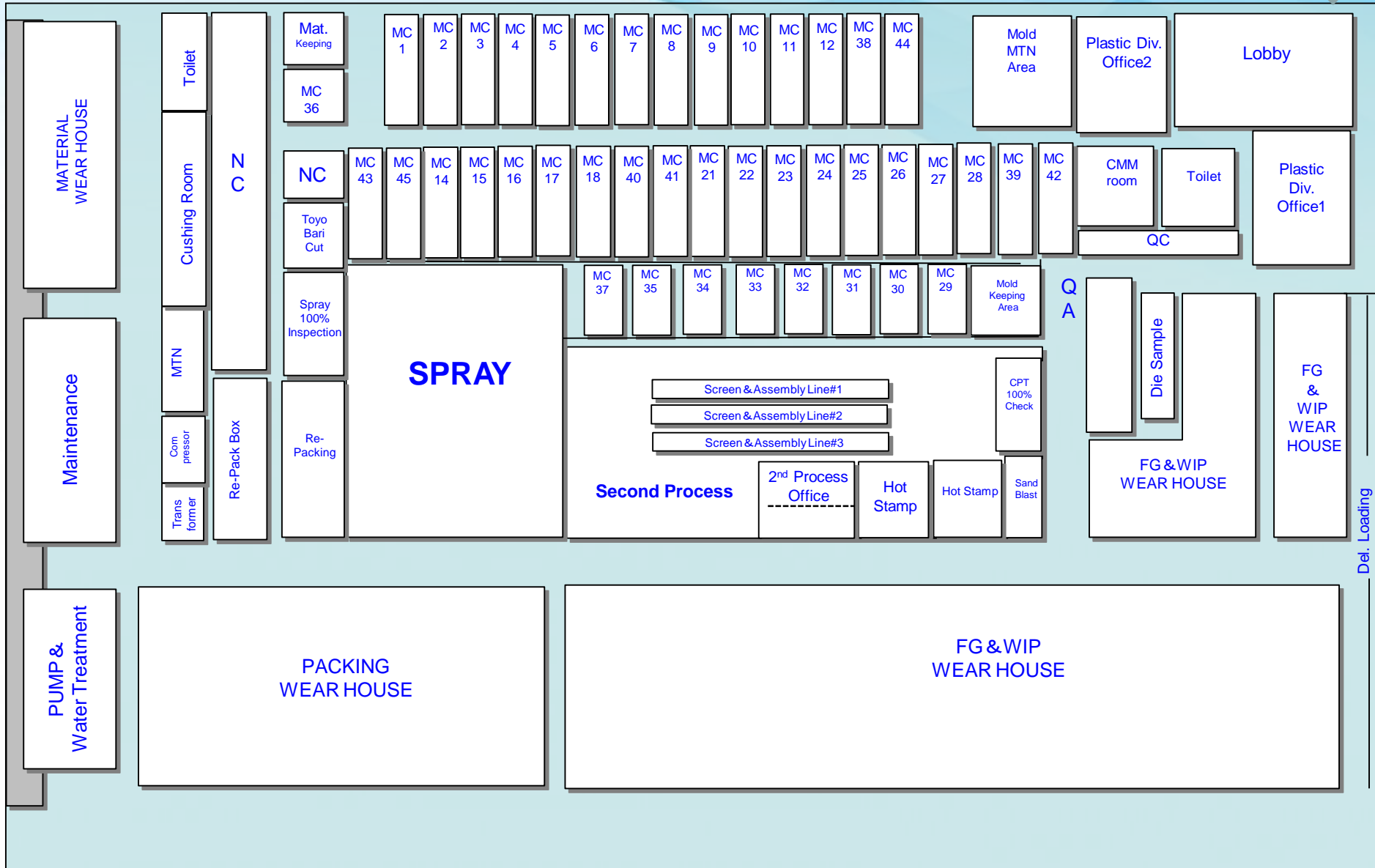
## HISTORY of MITSUWA GROUP

- 1959 Mitsuwa Electric Industry Co.,Ltd has been established in Osaka, Japan
- 1962 Plastic Molding Factory has been established in Osaka, Japan
- 1987 Thai Mitsuwa Public Co.,Ltd has been established in Thailand
- 1998 Magnesium project has been started in Osaka Factory.
- 2003 Listed on MAI,the Stock Exchange of Thailand
- 2004 2<sup>nd</sup> Factory at Korat in Thailand has been established.
- 2011 Korat Factory has been started the operation of Magnesium molding products.
- 2019 Korat Factory has been established in Korat Navanakorn Plant.



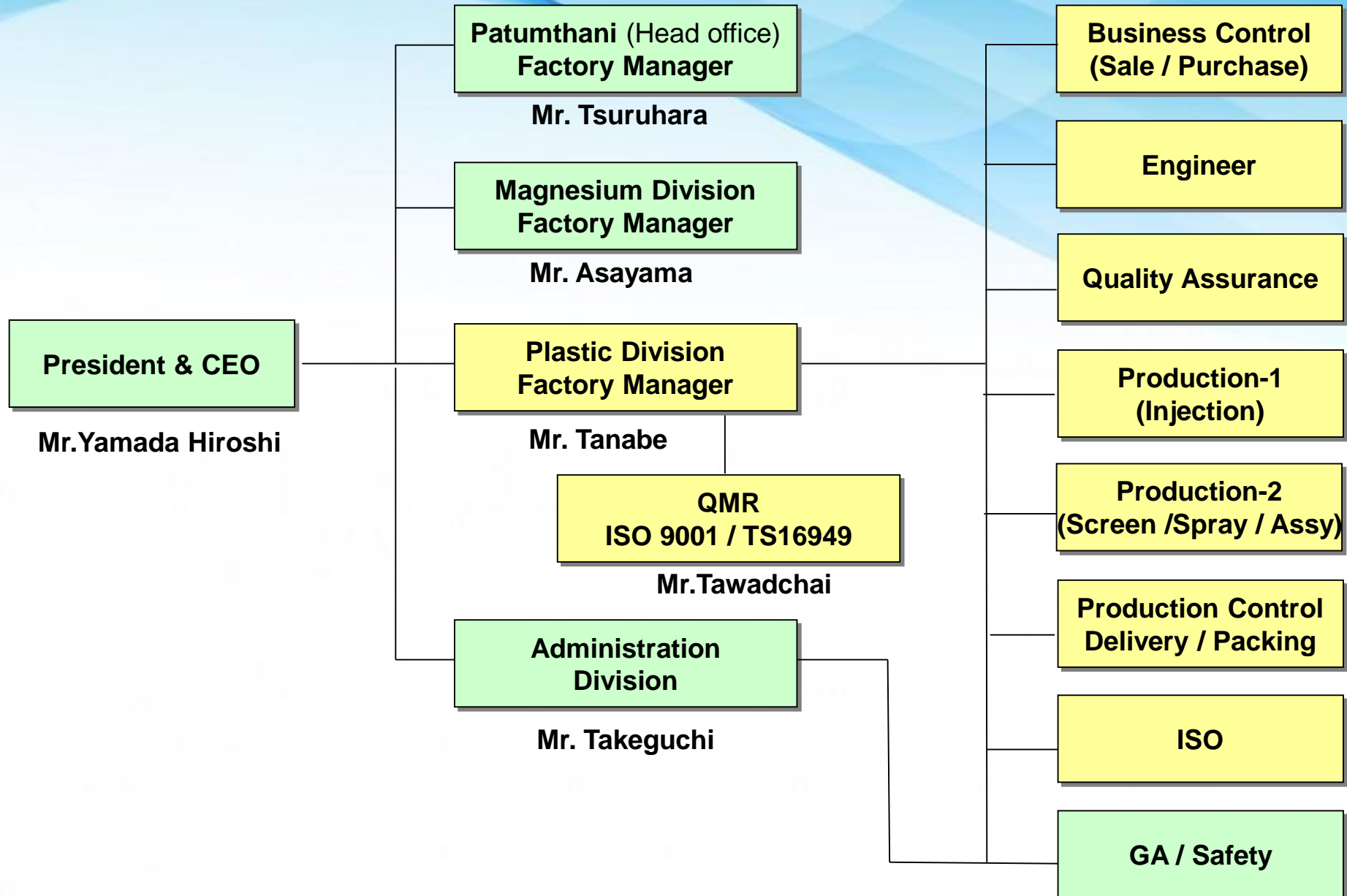
# FACTORY LAYOUT

Entrance





# ORGANIZATION





# INJECTION MACHINE

M/C No.	M/C SIZE (Tons)	MAKER
MC-1	220	NISSEI
MC-2	250	FANUC
MC-3	220	SUMITOMO
MC-4	450	JSW
MC-5	450	JSW
MC-6	350	JSW
MC-7	350	JSW
MC-8	350	JSW
MC-9	200	MEIKI
MC-10	200	MEIKI
MC-11	450	JSW
MC-12	350	MEIKI
MC-14	280	MEIKI
MC-15	280	MEIKI
MC-16	280	MEIKI
MC-17	280	MEIKI
MC-18	180	NISSEI
MC-21	150	MEIKI
MC-22	150	MEIKI
MC-23	100	FANUC
MC-24	100	FANUC

M/C No.	M/C SIZE (Tons)	MAKER
MC-25	100	SUMITOMO
MC-26	110	NISSEI
MC-27	110	NISSEI
MC-28	110	NISSEI
MC-29	50	NISSEI
MC-30	50	SUMITOMO
MC-31	50	FANUC
MC-32	50	FANUC
MC-33	50	FANUC
MC-34	50	SUMITOMO
MC-35	75	SUMITOMO
MC-36	30	FANUC
MC-37	50	FANUC
MC-38	450	JSW
MC-39	100	JSW
MC-40	220	JSW
MC-41	220	JSW
MC-42	100	JSW
MC-43	100	FANUC
MC-44	100	FANUC
MC-45	220	FANUC

Machine Size Class	Q'ty
30	1
50	7
75	1
100	7
110	3
150	2
180	1
200	2
220	5
250	1
280	4
350	4
450	4
<b>Grand Total</b>	<b>42</b>

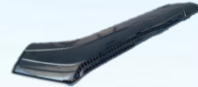


# Main Client & Production Line

## Plastic Injection Molding : Automotive Parts



Interior Parts



Drive Recorder Parts



Motor Cycle Parts



Client:







# INTERIOR PARTS FOR AUTOMOTIVE



**SUBARU FORESTER**



**NISSAN NAVARA**





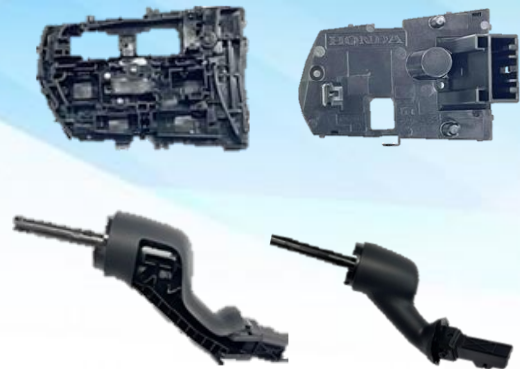


# INTERIOR PARTS FOR AUTOMOTIVE



HONDA

HONDA CIVIC / CITY / HRV



HONDA

HONDA HRV





# INTERIOR PARTS FOR AUTOMOTIVE



**NISSAN**

**X-TRAIL / NAVARA / TERRA /  
ALMERA / KICKS / NOTE /  
MARCH / SYLPHY / TEANA**



**HONDA SCOOPIE /  
CLICK 125i / SUPER CUP C125**





## Main Client & Product Line

**Plastic Injection : Electric Appliances  
( OA , Home Appliance and Other )**

**Office Automation  
(Copy Machine))**



**Home Appliance  
(Air Conditioner & Refrigerator)**



**Client:**

**Canon**

**OKI**  
**azbil**

**AIPHONE®**  
**Arçelik**

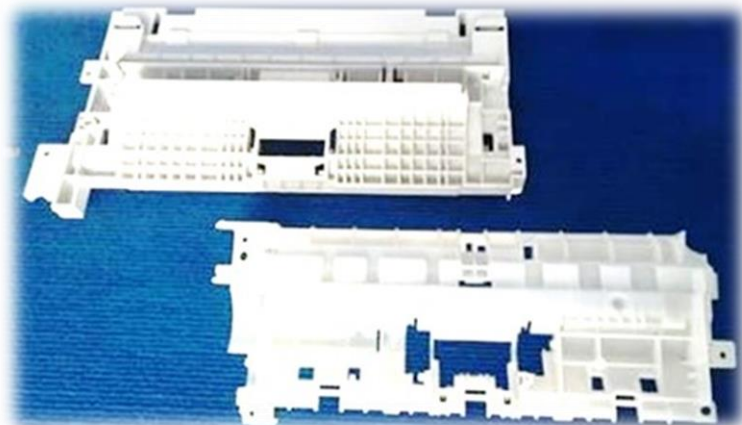
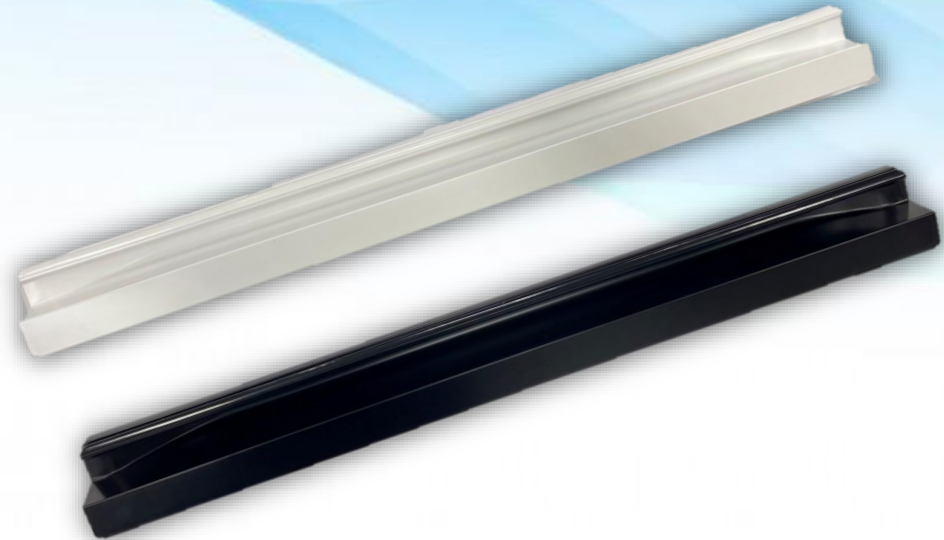
**Johnson  
Controls**  
**Team Precision  
Public Company Limited**





# **ELECTRIC APPLIANCES PARTS**

**OA , HOME APPLIANCE AND OTHER**

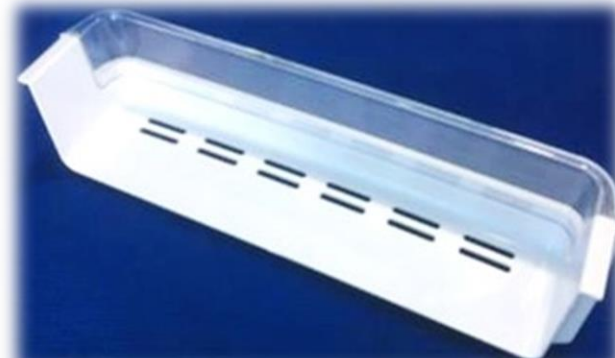
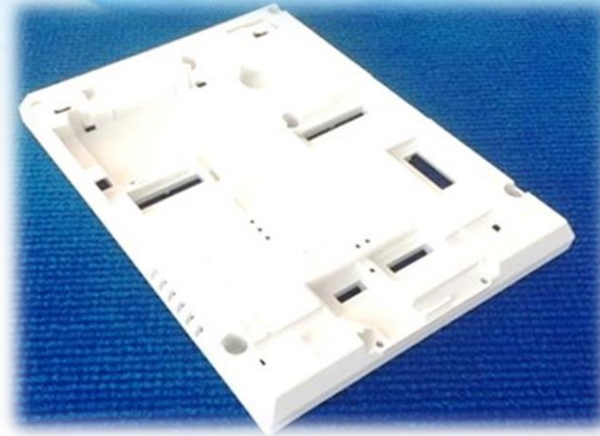






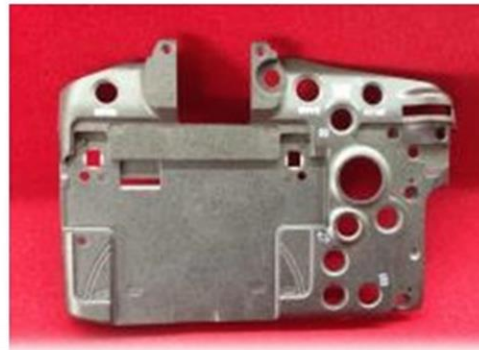
# ***ELECTRIC APPLIANCES PARTS***

***OA , HOME APPLIANCE AND OTHER***





# MAGNESIUM PRODUCTS





# Quality Certification

## ISO 9001 Management System Certificate



Certificate Number : JQA-QMA14994

Organization :

THAI MITSUWA PUBLIC COMPANY LIMITED (MAGNESIUM)  
159 MOO 6, TAMBOL THA-ANG, AMPHUR CHOKCHAI, NAKORN RATCHASIMA,  
THAILAND



JQA certifies that the above organization operates the Quality Management System, within the scope of the Appendix attached, which has been assessed and found to comply with the requirements of;

ISO 9001 :2015 / JIS Q 9001 :2015

Registration Date : March 28, 2014

Last Renewal Date : March 28, 2023

Expiry Date : March 27, 2026

Feel free to contact JQA for the validity of this certificate.

*N. Kobayashi*  
NORIAKI KOBAYASHI  
PRESIDENT

1-25 KANDASUDACHO, CHIYODA-KU, TOKYO, JAPAN

JAPAN QUALITY ASSURANCE ORGANIZATION

To be used in conjunction with attached Appendix.



22.06 D7501203E

## ISO 9001 Appendix



Certificate Number : JQA-QMA14994

1 / 1

Organization :

THAI MITSUWA PUBLIC COMPANY LIMITED (MAGNESIUM)

Scope of Registration:

THE MANUFACTURE OF MAGNESIUM INJECTION MOLDING PRODUCTS INCLUDING FINISHING AND ASSEMBLY OF THEIR COMPONENTS

ASSOCIATED ORGANIZATION:

·THAI MITSUWA PUBLIC COMPANY LIMITED (MAGNESIUM)  
999/27 MOO 1, TAMBOL NAKLANG, AMPHUR SUNG NOEN, NAKORN RATCHASIMA, THAILAND  
[THE MANUFACTURE OF MAGNESIUM INJECTION MOLDING PRODUCTS]

Registration Date : March 28, 2014

Last Renewal Date : March 28, 2023

Expiry Date : March 27, 2026

Feel free to contact JQA for the validity of this certificate.

*N. Kobayashi*  
NORIAKI KOBAYASHI  
PRESIDENT

JAPAN QUALITY ASSURANCE ORGANIZATION

This Appendix is an integral part of the Certificate and should only be used in conjunction with the Certificate.



22.06 D7501204E





# INJECTION PROCESS







## 2<sup>nd</sup> Process

### SCREEN & ASSEMBLY

Screen Line	4 Line
- PAD Printing (Tampo)	18 Machine
- Silk Printing (Manual Print)	Made to order
- UV Screen	1 Line
Assembly Line	3 Line

### SCREEN PRODUCT



### ASSEMBLY PRODUCT



### SCREEN PRODUCT



### SCREEN PRODUCT



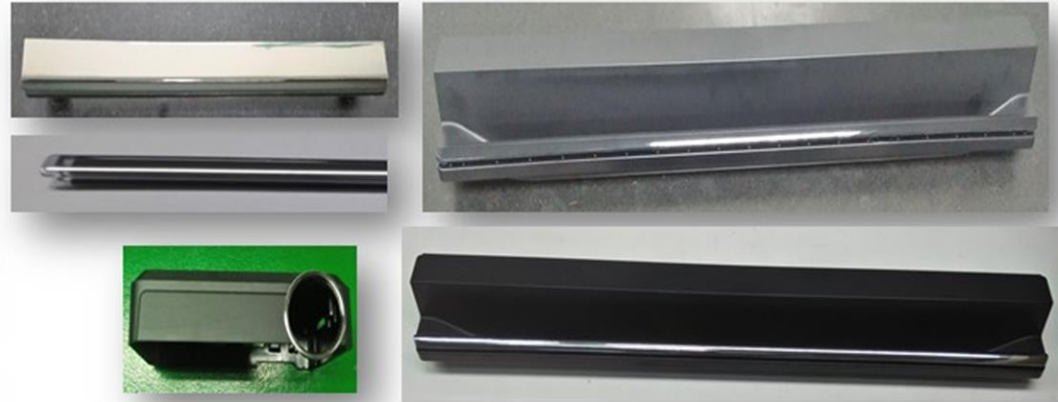


## 2<sup>nd</sup> Process

### HOT STAMP

MC LIST	Q'TY
- UP - DOWN (300 mm.)	1
- Roller (300 mm.)	1
- Roller (580 mm.)	1
- Roller (1,000 mm.)	1

### HOT STAMP PRODUCT





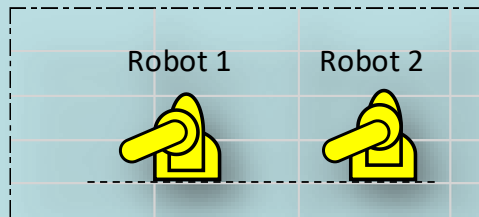
## 2<sup>nd</sup> Process

### SPRAY

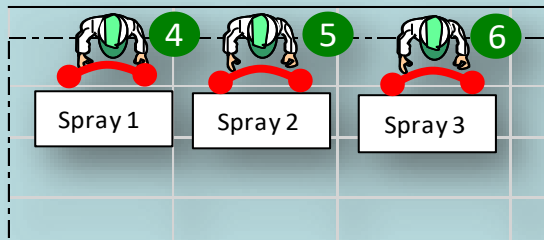
Spray Booth	Q'ty
Manual Spray	1 Booth
Auto(Robot) Spray	1 Booth
Total	2 Booth

### Spray Line

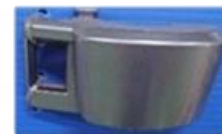
#### Auto Spray



#### Manual Spray



### SPRAY PRODUCT







## 2<sup>nd</sup> Process

### LASER PROCESS

### Laser Machine

LASER	Q'ty
Laser Machine	1 M/C
- Coating Remove	
- Marking	



### Coating Remove







# QUALITY ASSURANCE

## Quality Assurance Equipment



### Certificate

Standard ISO 9001:2015  
Certificate Registr. No. 01 100 2335134

Certificate Holder: Thai Mitsuwa Public Company Limited  
159 Moo 6, T. Tha-ang, A. Chokchai,  
Nakhon Ratchasima 30190, Thailand

Scope: THE MANUFACTURE OF INJECTION MOLDING PLASTIC COMPONENTS FOR VARIOUS INDUSTRIES INCLUDING THE ASSEMBLY, SURFACE PRINTING AND PAINTING OF COMPONENTS

Proof has been furnished by means of an audit that the requirements of ISO 9001:2015 are met.  
Validity: The certificate is valid from 2024-03-12 until 2027-03-11.  
First certification 2006

2024-03-12

www.tuv.com



### Certificate

Standard IATF 16949:2016  
Certificate Registr. No. 01 111 2335134  
IATF Certificate No. 0505150

Certificate Holder: Thai Mitsuwa Public Company Limited  
159 Moo 6, T. Tha-ang, A. Chokchai,  
Nakhon Ratchasima 30190, Thailand

IATF USI: 3W49RZ

Scope: MANUFACTURING OF INJECTION PLASTIC PARTS FOR INTERIOR AND EXTERIOR  
Excluding Product Design

Proof has been furnished by means of an audit that the requirements of IATF 16949:2016 are met.  
Validity: The certificate is valid from 2024-03-12 until 2027-03-11.

Release date: 2024-03-12



24AO-QMC 01003

www.tuv.com





# QUALITY ACTIVITIES

Visual Control



Quality Improve



Automatic Development



PDCA

T  
Q  
M

T  
P  
M

Kaizen

ISO

5 S

Training



5 S Activity



5s Audit







# Quality Certification

## Certificate

Standard **ISO 9001:2015**

Certificate Registr. No. **01 100 2335134**


Certificate Holder: **Thai Mitsuwa Public Company Limited**  
159 Moo 8, T. Tha-ang, A. Chokchai,  
Nakhon Ratchasima 30190, Thailand

Scope: **THE MANUFACTURE OF INJECTION MOLDING PLASTIC COMPONENTS FOR VARIOUS INDUSTRIES INCLUDING THE ASSEMBLY, SURFACE PRINTING AND PAINTING OF COMPONENTS**

Proof has been furnished by means of an audit that the requirements of ISO 9001:2015 are met.

Validity: The certificate is valid from 2024-03-12 until 2027-03-11.  
First certification 2006

2024-03-12

  
TÜV Rheinland Cert GmbH  
Am Grauen Stein - 51105 Köln

## Certificate

Standard **IATF 16949:2016**  
(1st edition, 2016-10-01)

Certificate Registr. No. **01 111 2335134**  
IATF Certificate No. **0505150**

Certificate Holder: **Thai Mitsuwa Public Company Limited**  
159 Moo 8, T. Tha-ang, A. Chokchai,  
Nakhon Ratchasima 30190, Thailand

IATF USI: **3WA9RZ**

Scope: **MANUFACTURING OF INJECTION PLASTIC PARTS FOR INTERIOR AND EXTERIOR**  
**Excluding Product Design**


Proof has been furnished by means of an audit that the requirements of IATF 16949:2016 are met.

Validity: The certificate is valid from 2024-03-12 until 2027-03-11.

Release date: **2024-03-12**



2-IAC-GMC 01003

  
TÜV Rheinland Cert GmbH  
Am Grauen Stein - 51105 Köln  
Germany - NRW

1 / 1



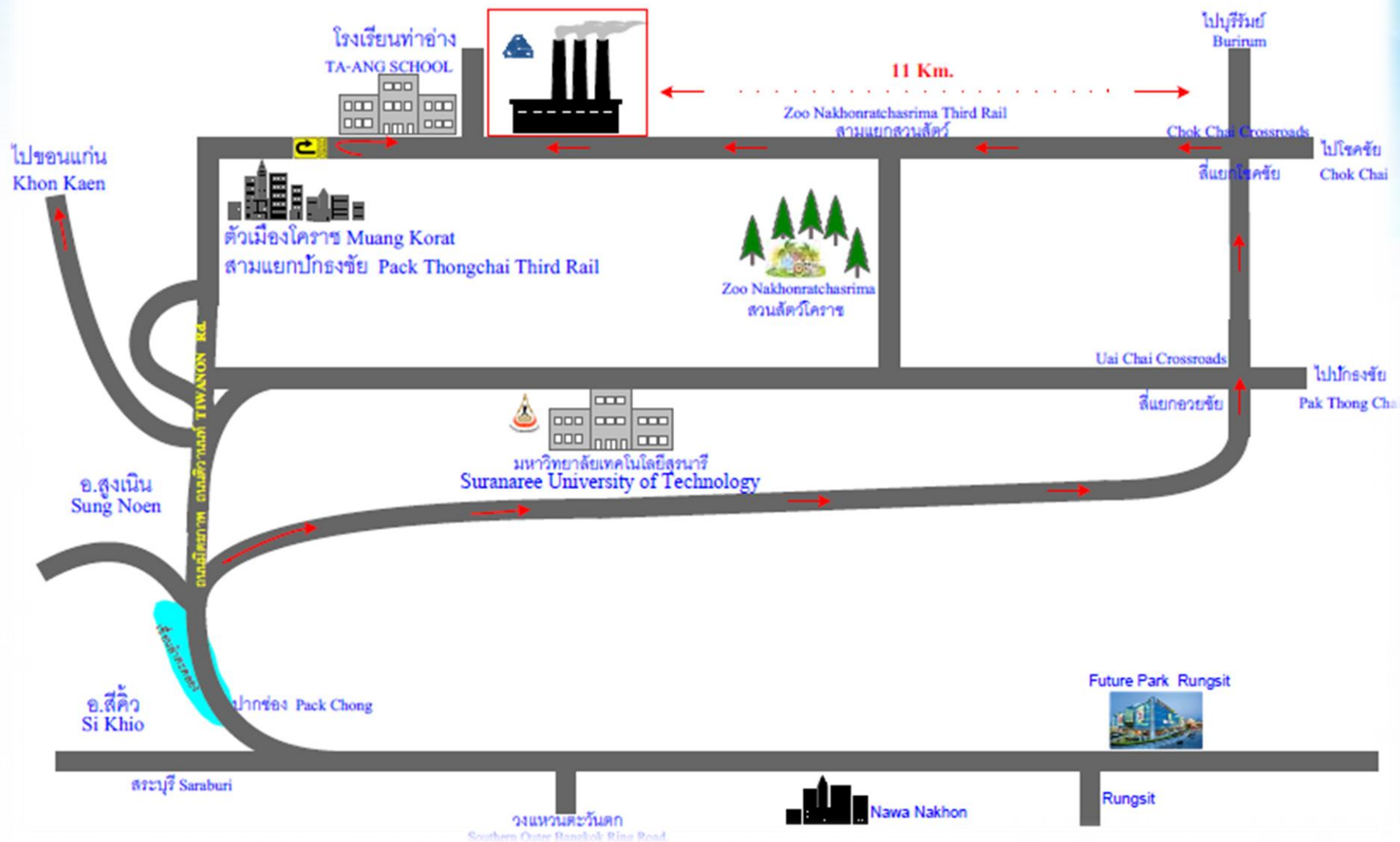
# MAP



## THAI MITSUWA PUBLIC COMPANY LIMITED

159 MOO 6 T.TA-ANG A.CHOKCHAI NAKHONRATCHASRIMA 30190

TEL: 044-338222 FAX: 044-338265-6



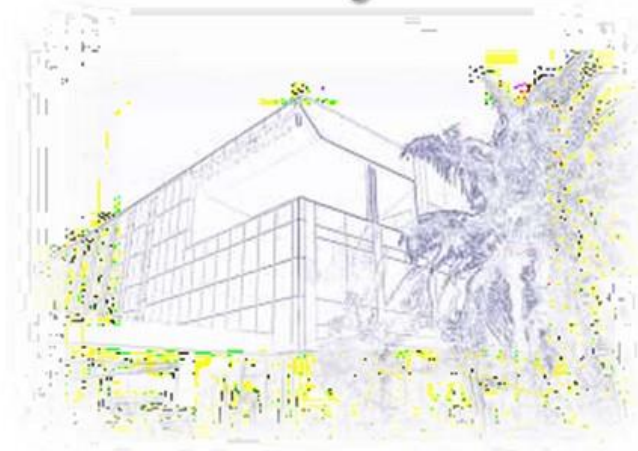




**MITSUWA**

***THAI MITSUWA PUBLIC CO.,LTD***

**Thank you...**



“Manufacturing products to fulfill customers' requirements, with supply high quality products, delivery on time and continuous improvement for customer satisfaction”